

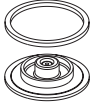
Modular line

AIRCOMP

042 1/4"

Accessori e ricambi
Spare parts

Gruppo membrana completo
Diaphragm complete



CODICE-CODE	PROD.	VERSION
C42.01.00013	R - FR	RELIEVING
C42.01.00014	R - FR	NON RELIEVING

Cupola spia completa
Oil window



CODICE-CODE	PROD.
C42.03.00005	L

Molla regolazione
Regulation spring



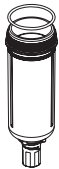
CODICE-CODE	PROD.	SET REGULATION
A38.00.00040	MR - R - FR	0÷4 Bar
A38.00.00020	MR - R - FR	0÷8 Bar
A38.00.00021	MR - R - FR	0÷12 Bar

Tappo olio con OR 2031
Oil plug with OR 2031



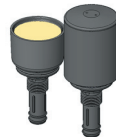
CODICE-CODE	PROD.
C75.03.00073	L

Tazza completa per filtro
Bowl for filter



CODICE-CODE	PROD.	VERSION
C40.02.00062	F - FR - MF	TT SS
C40.02.00108	F - FR - MF	PE SS
C40.02.00036	F - FR - MF	TC SS

Scarico automatico
Automatic drain



CODICE-CODE	PRODUCT
C40.02.00130 SA	F - FR - MF
C42.02.00012 SAD	F - FR - MF

Tazza con scarico automatico
Bowl with automatic drain



CODICE-CODE	PROD.	VERSION
C40.02.00133	F - FR - MF	TT SA
C40.02.00134	F - FR - MF	PE SA
C42.02.00017	F - FR - MF	TT SAD
C42.02.00014	F - FR - MF	PE SAD

Kit montaggio scarico automatico
Mounting kit for automatic drain



CODICE-CODE	PRODUCT
C40.02.00131	SA - SAD

Tazza completa per lubrificatore
Bowl for lubricator



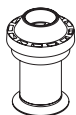
CODICE-CODE	PROD.	VERSION
C40.03.00082	L	TT
C40.03.00084	L	PE
C40.03.01016	VL	TT
C40.03.01017	VL	PE
C40.03.00047	L	TC

Manometro
Gauge



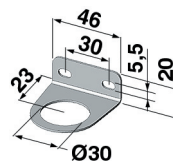
CODICE-CODE	Bar	Psi	A	B	CH.
A38.00.00026	0÷12	0÷175	40	G1/8"	14
A38.00.00055	0÷6	0÷85	40	G1/8"	12
A38.00.00104	0÷2,5	0÷36	40	G1/8"	12

Gruppo filtraggio
Filtering element



CODICE-CODE	PROD.	VERSION
C40.02.00101	F	20 MICRON
C42.04.00001	FR	20 MICRON
C40.02.00106	F	5 MICRON
C42.04.00005	FR	5 MICRON
C40.02.00053	MF	0,01 MICRON

Staffa fissaggio a parete
Bracket



CODICE-CODE
C38.00.00069